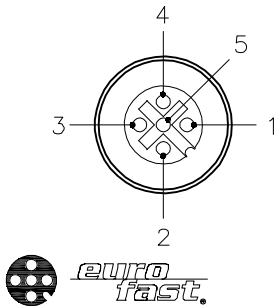
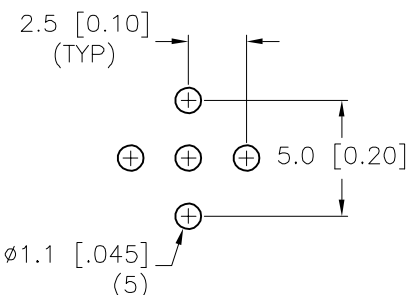
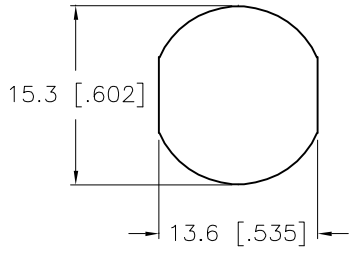
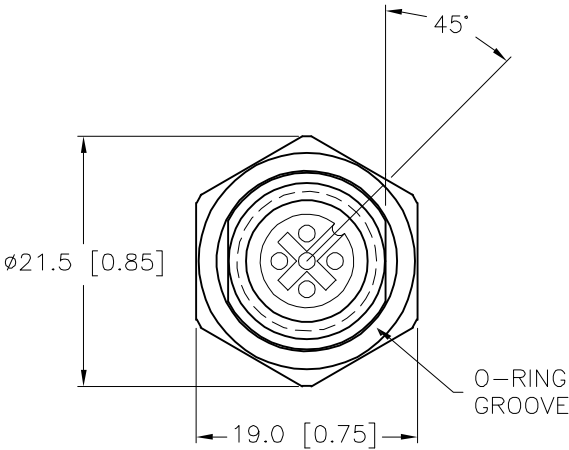
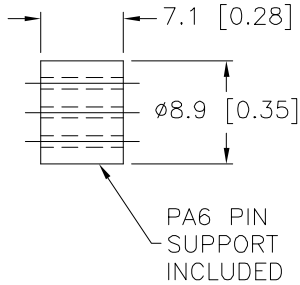
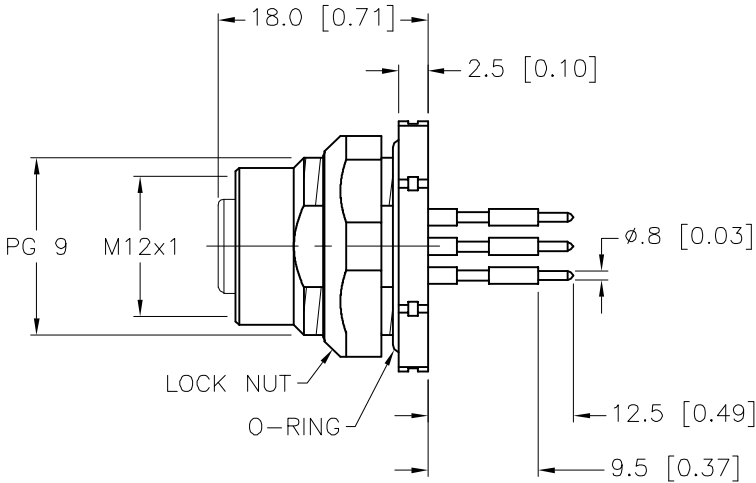


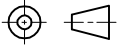
FEMALE END VIEW	BOARD LAYOUT	TYP. PANEL CUTOUT	SPECIFICATIONS	
			CONTACT CARRIER MATERIAL	NYLON OR TPU
			CONTACT MATERIAL/PLATING	BRASS/GOLD
			HOUSING, LOCKNUT MATERIAL/PLATING	BRASS/NICKEL
			RATED CURRENT [A]	4.0 A
			RATED VOLTAGE [V]	250 V
			O-RING MATERIAL	NITRILE
			NUMBER OF CONDUCTORS [AWG]	5 PRINTED CIRCUIT PINS
			TEMPERATURE RATING	-30°C to +80°C (-22°F to +176°F)
			PROTECTION CLASS	MEETS NEMA 1,3,4,6P AND IEC IP68
			MAX. PANEL THICKNESS	3.0 [0.12]



END VIEW
LOCK NUT NOT SHOWN



SOURCE DRAWING - FOR REFERENCE ONLY

RELATED DOCUMENTS					3RD ANGLE PROJECTION		THIS DRAWING IS CONFIDENTIAL AND THE PROPERTY OF TURCK INC. USE OF THIS DOCUMENT WITHOUT WRITTEN PERMISSION IS PROHIBITED.		3000 CAMPUS DRIVE MINNEAPOLIS, MN 55441 1-800-544-7769 (763) 553-7300 (763) 553-0708 fax www.turck.us	
1. 2. 3. 4.							DRFT SWC		DATE 09/05/95	
MATERIAL					ALL DIMENSIONS DISPLAYED ON THIS DRAWING ARE FOR REFERENCE ONLY		APVD		SCALE 1=.7	
FINISH					CONTACT TURCK FOR MORE INFORMATION		UNIT OF MEASUREMENT		DESCRIPTION	
SEE SPECIFICATIONS					MILLIMETER [INCH]		DO NOT SCALE THIS DRAWING		FKFD 4.5	
SEE SPECIFICATIONS									IDENTIFICATION NO.	
									U4500	
									REV	
									J	
J	NOTATE THE KEYWAY IS 45° FROM THE MOUNTING FLAT	RDS	04/25/22	77572					FILE: U4500	
REV	DESCRIPTION	BY	DATE	ECO. NO.					SHEET 1 OF 1	